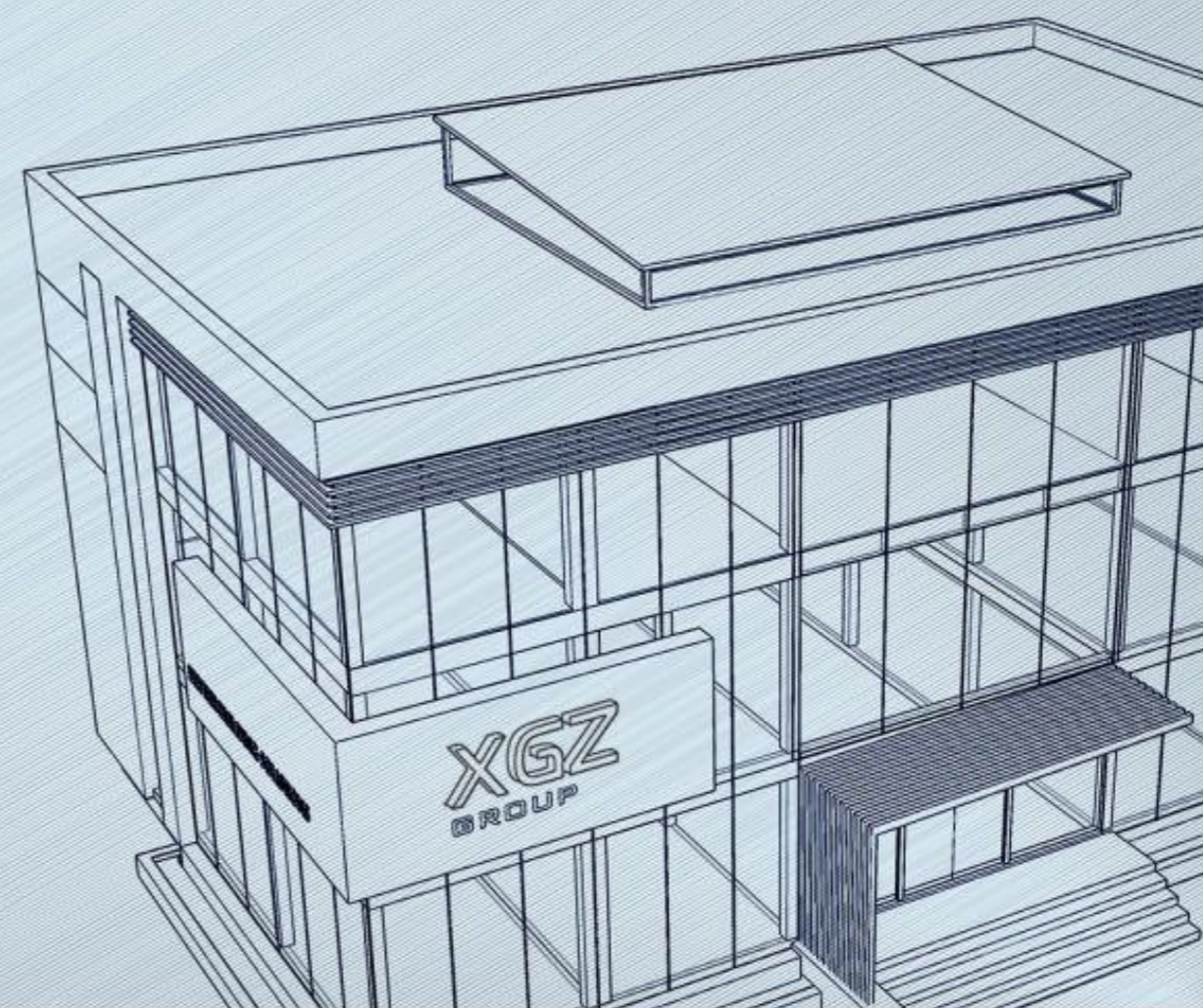


MODULAR HOUSE

集成化房屋



RESIDENTIAL HOUSING

ECONOMIC FLATPACK CONTAINER HOUSE

1 住宅类 经济型折叠房屋



经济型折叠房屋使用标准型折叠房屋作为单位模块，可进行多拼、多层自由组合。

Economic Flatpack Container House is a kind of modular house, could be combined into multiple and multilayer as customer requirement.



标准配置

尺寸	20 英尺及定制尺寸
主框架	轻钢结构
保温材料	EPS/PU/ 玻璃丝棉 / 岩棉复合板
地板	木板 / 水泥板上铺 PVC 地板革 / 木地板
门	复合板门 / 钢木门 / 铁门等
窗	塑钢窗 / 铝合金窗 / 防盗窗等

Standard Specification

Size	20ft' or Customized
Main Frame	Light steel structure
Insulation	EPS/ PU/ Glasswool/ Rockwool sandwich panel
Floor	Plywood/ Cement floor with PVC /Wooden flooring
Door	Sandwich panel door/ Steel Wooden door/ Steel door
Window	Plastic steel window/ Aluminium alloy window/ Safety window and ect.

RESIDENTIAL HOUSING

SHIPPING CONTAINER HOUSE

2 住宅类 海运箱式集装箱房



标准配置

尺寸	20 英尺和 40 英尺
主框架	海运集装箱
内墙	复合板或轻钢龙骨系统
地板	集装箱木地板 / 水泥板上铺 PVC 地板革 / 木地板
门	木门 / 铁门
窗	塑钢窗 / 铝合金窗 / 防盗窗等

Standard Specification

Size	20ft' and 40ft'
Main Frame	Shipping Container
Internal Wall	Sandwich panel/ Light steel keel system
Floor	Shipping container floor/ Cement floor with PVC/ Wooden flooring
Door	Wooden door/ Steel Door
Window	Plastic steel window/ Aluminium alloy window/ Safety window and ect.

RESIDENTIAL HOUSING

MODULAR HOTEL

3 住宅类 现代集成化酒店



WAREHOUSE

INTEGRATED FOLDING STORAGE CONTAINER

1 仓库类 整体式折叠仓库

整体式折叠仓库被广泛应用于搬家、家庭储存、应急处理、仓库等方面。外观类似折叠式集装箱，主要使用钢结构材料、彩钢板制作而成，双开门更加方便。

Integrated folding storage container is widely used for house moving, family storage, emergency situation, warehouse and so on. It looks like a kind of foldable container which is made of steel materials and galvanized steel sheet. Double steel doors are convenient.



标准配置

尺寸	10 英尺 12 英尺 16 英尺 19 英尺
表面处理	油漆或粉末涂层
地板	木板
墙	钢结构骨架及彩钢板墙面
门	铁制双开门
屋面	铁制瓦楞屋面或平屋面

Standard Specification

Size	10ft' , 12ft' , 16ft' , 19ft'
Surface	Painted or Power Coated
Floor	Plywood
Wall	Steel Frame with galvanized Steel Sheet
Door	Steel double door
Roof	Corrugated or Flat Steel Sheet



优点:

1. 坚固耐用。
2. 便携式结构，可以快速有效的运输和存储。
3. 低成本。
4. 多次拆装无损坏。

Advatage:

1. Solid and durable
2. Foldable structure for quick and efficient transportation or storage.
3. Low cost.
4. Can be quickly installed and uninstalled without damage.



WAREHOUSE

SPLIT FOLDING STORAGE CONTAINER

2 仓库类 分体式折叠仓库



分体式折叠仓库具有可折叠、便携、低成本、多次拆装无破损率等优点，可快速、高效率的运输或是仓储货物。

Split folding storage container is foldable, man-portable, low-cost and can be quickly installed or uninstalled without damage. They are efficient used for goods transportation or storage.



标准配置

尺寸	10 英尺 12 英尺 16 英尺 19 英尺
防腐处理	油漆或粉末涂层
地板	木板或花纹钢板
墙	钢结构骨架及彩钢板 / 复合板墙面
门	铁制双开门
屋面	铁制瓦楞屋面或平屋面

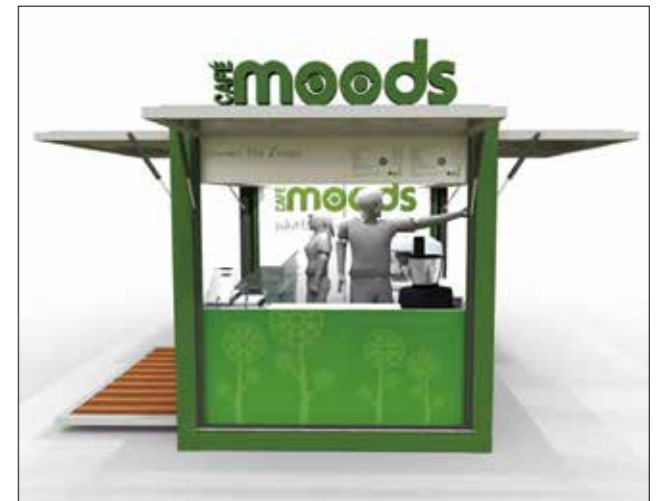
Standard Specification

Size	10ft' 12ft' 16ft' 19ft'
Surface	Painted or Power Coated
Floor	Plywood or Riffled Floor
Wall	Steel Frame with galvanized steel sheet/ sandwich panel
Door	Steel double door
Roof	Corrugated or Flat Steel Sheet

EXHIBITION HALL

HYDRAULIC SHOWROOM

1 展厅类 液压式展厅



标准配置

尺寸	20 英尺、40 英尺
主框架	海运集装箱
动力系统	液压系统
地面和展翼	铝花纹板
吊顶	铝板
其他配置	LED 灯、配电箱、开关、插座、遮阳篷等

Standard Specification

Size	20ft' or 40ft'
Main Frame	Shipping Container
Power system	Hydraulic system
Floor & Wing	Aluminium checkered plates
Ceiling	Aluminium plate
Other accessories	LED lights, electric box, switch, socket, awning.

EQUIPMENT CONTAINER

1 设备房



标准配置	
尺寸	20 英尺, 40 英尺或定制尺寸
主结构	轻钢结构或集装箱框架
墙	钢结构骨架及瓦楞板
地板	多层木地板、水泥纤维板、花纹钢板
门	铁制双开门
屋面	瓦楞钢板

Standard Specification	
Size	20ft' , 40ft' or customized
Main Frame	Light Steel Structure or Shipping Container Frame
Wall	Steel Frame with corrugated steel Sheet
Floor	Plywood, cement, riffled plate
Door	Steel double door
Roof	Corrugated steel Sheet

INSULATION MATERIAL

1 保温材料



聚氨酯复合板
EPS Sandwich panel



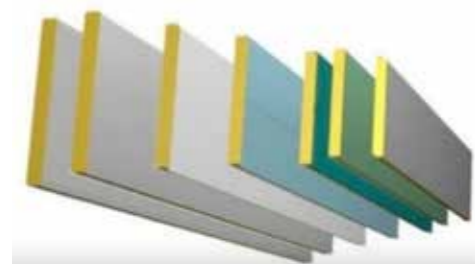
玻璃棉复合板
Glasswool Sandwich panel

聚氨酯产品性能指标 Polyurethane Product Specifications

项 目 Item	指 标 Norm	分 类 Classification	类 型 Type			
			I		II	
密度 Densit(kg/m ³)	不小于	不小于	30	30	30	30
压缩性能 屈服点时或形变 10% 时的压缩应力 (KPa) Compression Performance:compressive stress at the yield point or in the case of 10% of deformation	不小于	不小于	100	100	100	150
导热系数 Thermal Conductivity(W/(m · K))	不大于	不大于	0.022	0.027	0.022	0.027
尺寸稳定性 Dimensional Stability(70°C、48h)(%)	不大于	不大于	5	5	5	5
水蒸气透湿系数 Water Vapor Permeability (23±2)°C /0% 至 85%RH(ng/Pa · m · s)	不大于	不大于	6.5		6.5	
吸水率 Absorption(%)	不大于	不大于	4		4	
燃烧性 Flammability	垂直燃烧法 Vertical Burning	平均燃烧时间 Average Burning Time(s)	不大于	30	30	
		平均燃烧高度 Average Height of Burning (mm)	不大于	250	250	
	水平燃烧法 Horizontal Burning	平均燃烧时间 Average Burning Time(s)	不大于	90	90	
		平均燃烧高度 Average Height of Burning (mm)	不大于	50	50	

玻璃棉复合板的物理性能指标 Physical Property Index of Glasswool panel

项 目 Item	单 位 Unit	性 能 指 标 Performance Specification	性能指标 Performance Specification			
			I	II	III	
表面密度 Apparent Density	不小于	kg/m ²	15	20	30	
压缩强度 (即在 10% 形变下的压缩应力) Compressive Strength (Compressive Stress in the case of 10% of deformation)	不小于	kPa	60	100	150	
导热系数 Thermal Conductivity	不大于	W/(m · K)	0.041	0.041	0.041	
70°C 48h 后尺寸变化率 Dimensional Stability after 48 hours at 70°C	不大于	%	5	5	5	
水蒸气透湿系数 Water Vapor Permeability	不大于	(ng/Pa · m · s)	9.5	4.5	4.5	
吸水率 Absorption(%)	不大于	%	6	4	2	
熔结① Melting Nodal	断裂弯曲负荷 Breaking Load	不小于	N	15	25	25
	弯曲变形 Flexural Deformation	不小于	mm	20	20	20
氧指数② Oxygen Index(OI)	不小于	%	30	30	30	



岩棉板的物理性能指标
Physical Property Index of Rockwool

岩棉板性能特点：

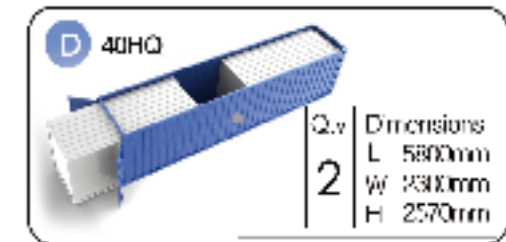
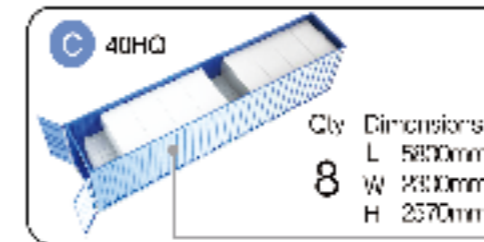
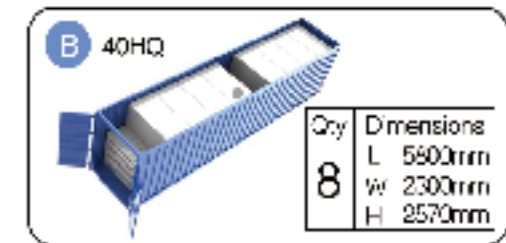
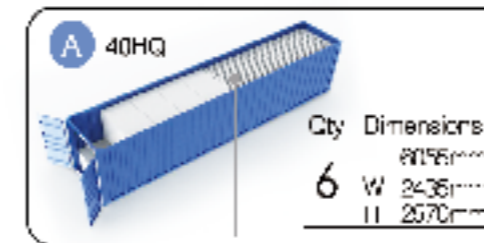
1. 绝热性能好
2. 不可燃
3. 具有优良的隔音和吸声性能

Rockwool panel performance characteristics:

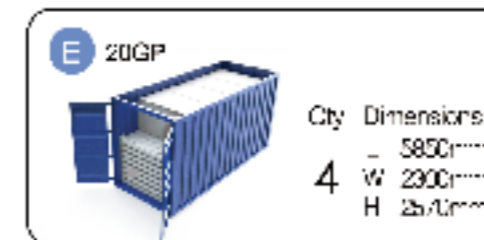
- 1.the thermal insulation performance is good
- 2.nonflammable
- 3.it has excellent sound insulation and sound absorption performance

PACKING AND SHIPPING

2 包装及运输



Fully assembled model



Note:

for ease of transportation, we produce container houses based on regular way of marine transportation. Shipping method will be determined by the order conditions.

HOUSING FACILITIES

1 房屋配套设施



吸顶灯
Light



防盗门
Steel door



钢木门
Steel Wooden door



塑钢窗
Plastic steel window



铝合金窗
Aluminum window



排气扇
Exhaust fan



楼梯
Stairs



卫生间隔断
Toilet partition



太阳能板
Solar panel



壁挂空调
Wall air conditioner



柜式空调
Cabinet air conditioner



洗手盆
Hand basin



洗手盆
Hand basin



洗菜池
Sink



坐便池
Sitting toilet



蹲便池
Squatting toilet



小便池
Urinal



沐浴房
Shower room



沐浴底座
Shower base



衣柜
Wardrobe

ENGINEERING PROJECT

CONTAINER OFFICE BUILDING

1 工程展示 集装箱办公楼



三层集装箱办公楼项目建于2014年。办公楼主体由15个集装箱框架拼接而成，总设计高度10.52m，使用面积828.9㎡，内室设有三层办公大厅、一个大型会议室、五个小型会议室及卫生间。

Three layer container office building was built in 2014. Main frame is made up of 15 sets container frame, total height is 10.52m and area is 828.9m². This building has three layer office, one large conference room, five small conference rooms and toilets.



ENGINEERING PROJECT

CONTAINER HOUSE IN SOUTH AFRICA

2 工程展示 南非箱房

南非集装箱房项目建于 2010 年，总计 100 余套住宅房屋，由我司提供设计、制作加工及工地安装指导。

This project was built in South Africa in 2010. We provide design, production processing and installation guide for more than 100sets container houses.



ENGINEERING PROJECT

20'FT SHIPPING CONTAINER HOUSE IN NEW ZEALAND

3 工程展示 20 尺新西兰改装箱



ENGINEERING EXHIBITION

40'FT SHIPPING CONTAINER HOUSE IN AUSTRALIA

4 工程展示 40 尺澳大利亚改装箱



ENGINEERING PROJECT

DATA CENTER IN VANUATU

5 工程展示 瓦努阿图数据中心

瓦努阿图数据中心建设于 2013 年。房屋单体建筑面积 245 m²，内部配置发电机组、不间断电源系统、中央空调、电缆桥架等设施，可在无外部电源接入的情况下，独立支持内部电脑机房等设备正常运转 36 小时以上。在 2015 年的瓦努阿图风暴中，成为全岛唯一对外通信点，拯救了数百人的生命，并作为灾后重建基地之一。

Data center in vanuatu was built in 2013, monomer floor area is 245m². There are generators, UPS system, central air conditioner, cable tray and other facilities in. It can support all the internal computer equipments working normal operation more than 36 hours without any external power supply.

Data center was the only place can get in touch with outside in vanuatu storm in 2015, it saved hundreds of lives and became one of the reconstruction base.



ENGINEERING PROJECT

CONTAINER RESTAURANT

6 工程展示 集装箱餐厅

集装箱餐厅以标准集装箱房屋为模块进行设计组装，通过结合钢结构屋面、钢结构平台、外墙挂板等元素，使房屋整体更美观实用。

Container restaurant is assembled by modular standard container houses. It is more beautiful and practical for design and application of steel roof, steel platform and exterior wall cladding



QINGDAO INTERNATIONAL HORTICULTURAL EXPOSITION

7 工程展示 青岛国际园艺博览会

青岛国际园艺博览会二层项目建设于2014年，房屋主框架由48套特制集装箱体构成，总建筑面积约1440平方米。

Qingdao international horticultural was built in 2014. Main frame of this two-layer building is 48 sets of customized containers frame, total area is about 1440 square meters.



ENGINEERING PROJECT

CONTAINER COFFEE SHOPS IN IRAQ

8 工程展示 伊拉克咖啡厅



伊拉克咖啡厅项目建于2012年与2013年，单体咖啡厅尺寸为11800mm×4600mm×2500mm。咖啡厅内配备了储物室、空调、冰柜、咖啡机、桌椅等全套设施。

Container coffee shops in Iraq were built in 2012 and 2013. Each size of the unit shop is 11800mm×4600mm×2500mm. Storage room, air conditioner, refrigerator, coffee machines, tables, chairs and etc. are equipped with the house.

ENGINEERING PROJECT

CONTAINER CARPORT

9 工程展示 集装箱车库

集装箱车库采用彩钢复合板作为保温材料，配置了电动卷帘门与花纹钢板地面。具有经济实用、安装迅速、可移动等优点。常用标准尺寸为6055mm×4810mm×2570mm，可依据不同车型及使用要求自由组合。

Galvanized steel sandwich panel is the insulation of container carport, electric shutter and ruffled plate floor are equipped with it. Container carport is economic, fast installation, movable, and etc. Normal size is 6055mm×4810mm×2570mm, it could be customized.



ENGINEERING PROJECT

DORMITORY FOR MINES IN AUSTRALIA

10 工程展示 澳大利亚矿山宿舍

澳大利亚矿山宿舍建于2013年，单体房屋尺寸为14m*3.5m*3m。房屋采用轻钢框架结构、玻璃丝棉保温层与防火石膏板内墙，完全符合澳洲标准。横向瓦楞外墙设计使整体外观更具时尚气息。

Dormitory for mines in australia was built in 2013, modular size for each house is 14m * 3.5 m* 3m. Main frame is light steel structure, insulation material is glasswool, fireproof plasterboard is used for interior wall to make sure everything is full compliance with Australian standards. Lateral corrugated wall appearance designing is modern.



ENGINEERING PROJECT

CAMP IN BURKINA FASO

11 工程展示 布基纳法索营地



布基纳法索营地由95套20尺集装箱折叠房屋组建而成。营地建设包括了员工餐厅、宿舍、公共卫生间、办公室、诊所等功能房间，卫浴及水电系统配套齐全。我司为客户提供了从设计、制作到工地施工指导的系列服务。

CAMP IN BURKINA FASO contains 95 sets of 20ft' flatpack container houses. There are employee dining room, dormitory, public washroom, office and clinics. The camp has complete facilities containing bathroom, water system and electric system. We provide design, manufacture and help installation, offering a full array of services to customers.